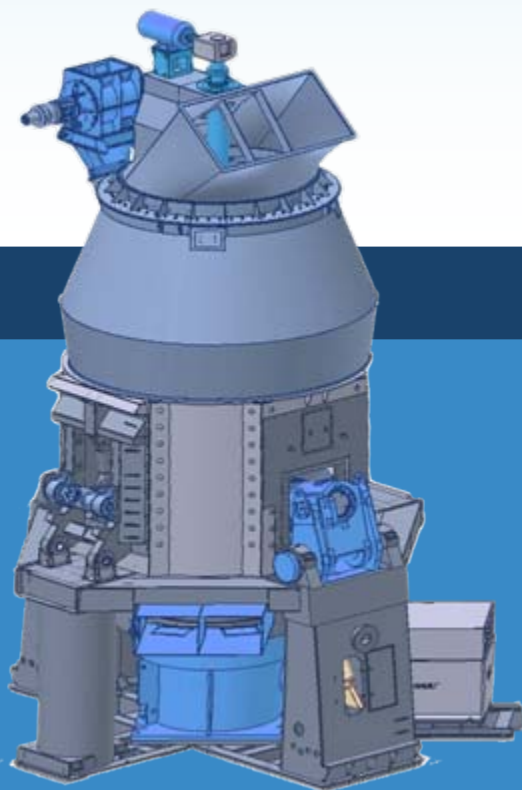




LYC Bearings for Cement and Mining Equipment



Website: www.lycbearing.com



● Mining Equipment——Roller Press

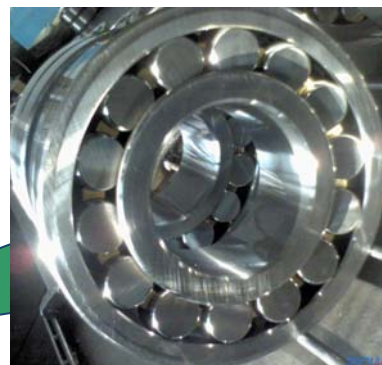


Equipment Model: Roller Press CLF170100

- Used for the rolling of cement clinker, abrasive grain 95% is less than 45mm, max. 95mm, the maximum of roller is 11900kN, main bearing type: 241/750CAK30/C3W33, it could bear large radial load and part of axial load, resist impact, and has self-aligning property. Spherical roller bearing with taper cone and CA structure is easy to mount and dismount. The bearing adopting the clearance group of C3 could greatly reduce the heat.



● Mining Equipment——Vertical Mill for Cement Material



Main Machine Model: Vertical Mill HRM3700

Grinding Roller Bearing Type: 3680

● Spherical Roller Bearing with double half cages: the bearing is made of GCr15SiMn, and it could bear larger radial load and part of axial load, resist impact, and has self-aligning property.



- Mining Equipment——
Vertical Mill for Slag



- Vertical mill for slag is environment protection equipment, grinding slag is recycled. Due to the high hardness of slag, grinding roller will bear big impact load during working, so bearings for grinding roller often adopt optimal designed double-row taper roller bearing and single(double) row cylindrical roller bearing, the material of bearing is quality carburizing steel G20Cr2Ni4A, which has good performance in wear resistance and impact resistance.



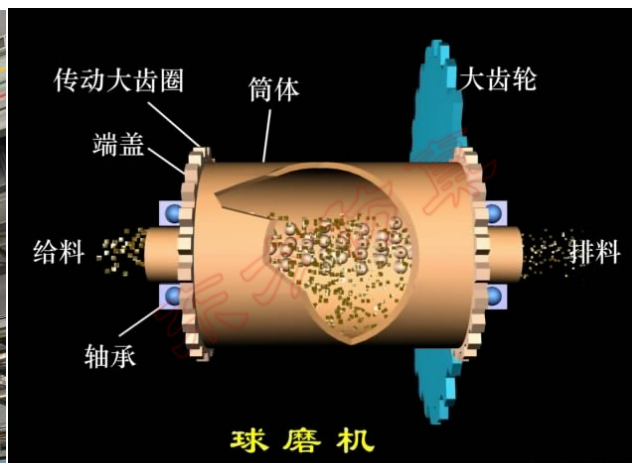
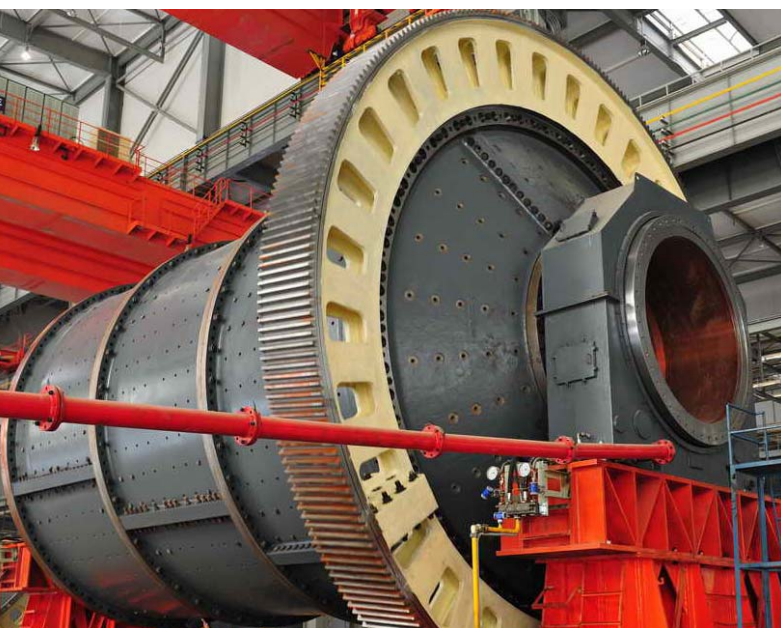
● Mining Equipment——Crankshaft Bearing for Vertical Mill



● Crankshaft at rear end of grinding roller of vertical mill is mounted in the split bearing housing, rear end of crankshaft is joint and supported by hydraulic rod, crankshaft is swing within the range of 15 degree during working. Crankshaft bearing basically bear static load, but with big vibration. So it must guarantee the connecting bolts on split bearing housing is preloaded enough, which avoid the looseness of bolts due to the vibration during working, and result in the cracked damage of bearing rings.



● Mining Equipment——Ball Mill

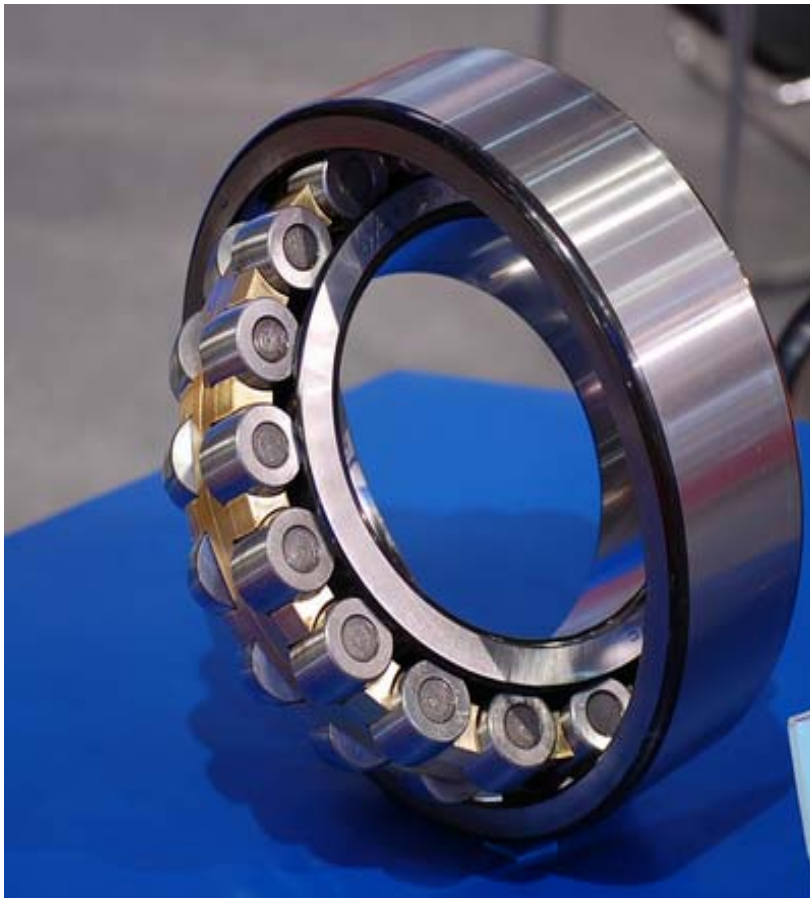


- Ball mill is a kind of large raw material grinding mill, which grind the material by metallic balls, and the maximum diameter and length of ball mill could be up to 11m and 5.4m separately. The main shafts of both ends adopt extra-large spherical roller bearings, which has high load capacity and impact resistance. Bearing Type:241/800/W33



Bearing for Rotary Kiln

- Low Speed, Bear Large Radial Load



- Low Speed, Bear Large Axial Load





● Mining Equipment——Crusher



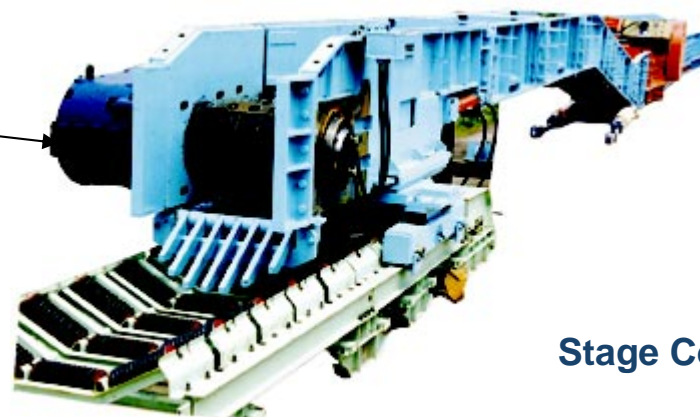
- Jaw crusher has the characteristics of big crush ratio, epigranular, simple structure, reliable working, convenient maintenance and low operating cost etc.. The main shaft usually adopts spherical roller bearing with split cage and clearance group C3, it has high load capacity and good self-aligning.



Belt Conveyor



Drag Conveyor



Stage Conveyor



◆ Cylindrical Roller Bearing



◆ Spherical Roller Bearing



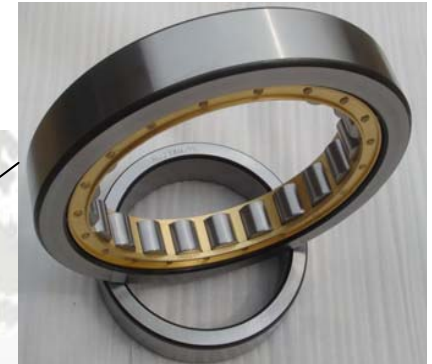
◆ Deep Groove Ball Bearing



◆ Taper Roller Bearing



Application of LYC Products in Coal Mine Machinery



This is domestically the first high-power development machine for hard rock EBZ200H researched and produced by Shenyang Sany Heavy Equipment Co., Ltd. Its cutting unit used SKF and FAG product in the past, and now there are three types of LYC bearings instead of imported brand successfully. The types are 32052 T194/P6DB, NU 1048MA, NJ2892DM/P63.